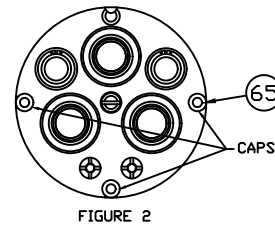
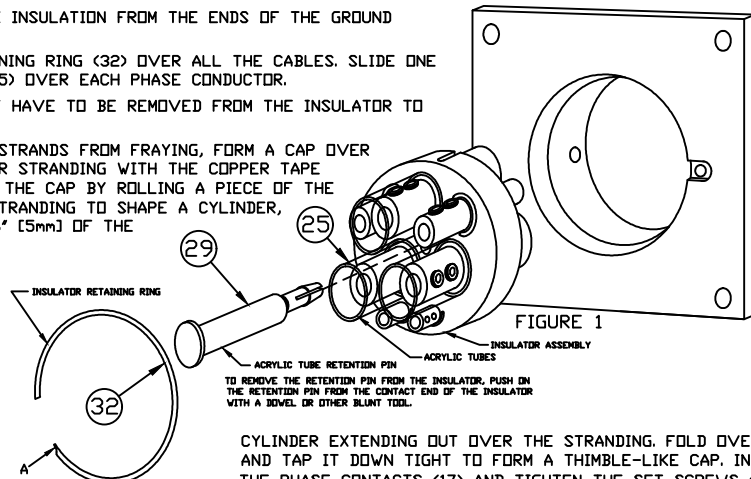


# ASSEMBLY INSTRUCTIONS

- 1) REMOVE THE INSULATOR RETAINING RING (32) BY PLACING A SCREWDRIVER IN THE NOTCHED END OF THE RING (A) AND LIFTING IT OUT OF THE SLOT.
- 2) REMOVE THE INSULATOR FROM THE HOUSING.
- 3) REMOVE 1-1/2" [38mm] OF THE INSULATION FROM THE ENDS OF THE PHASE AND GROUND CONDUCTORS.
- 4) REMOVE 7/8" [22mm] OF THE INSULATION FROM THE ENDS OF THE GROUND CHECK WIRES.
- 5) SLIDE THE INSULATOR RETAINING RING (32) OVER ALL THE CABLES. SLIDE ONE ACRYLIC INSULATOR TUBE (25) OVER EACH PHASE CONDUCTOR.  
NOTE: THE CONTACTS DO NOT HAVE TO BE REMOVED FROM THE INSULATOR TO INSTALL THE CONDUCTORS.
- 6) IN ORDER TO PREVENT THE STRANDS FROM FRAYING, FORM A CAP OVER THE ENDS OF THE CONDUCTOR STRANDING WITH THE COPPER TAPE PROVIDED IN THE KIT. FORM THE CAP BY ROLLING A PIECE OF THE COPPER TAPE AROUND THE STRANDING TO SHAPE A CYLINDER, LEAVING 1/8" [3mm] TO 3/16" [5mm] OF THE

THE INSULATOR IS SUPPLIED WITH 4 SLOTS FOR ALIGNMENT IN THE SOCKET HOUSING. THE SLOTS IN THE 3, 6, AND 9 O-CLOCK POSITIONS ARE CAPPED AS SHOWN BELOW.

THE INSULATOR CAN BE ROTATED IN THE HOUSING TO PREVENT INTERCONNECTION BY RECONFIGURING THE CAPS AND EXPOSING THE DESIRED SLOT.



CYLINDER EXTENDING OUT OVER THE STRANDING. FOLD OVER THE THE END OF THE CYLINDER AND TAP IT DOWN TIGHT TO FORM A THIMBLE-LIKE CAP. INSERT THE PHASE CONDUCTORS INTO THE PHASE CONTACTS (17) AND TIGHTEN THE SET SCREWS (24) USING AN ALLEN WRENCH WITHOUT ADDITIONAL LEVERAGE.

- 8) INSERT THE GROUND WIRES INTO THE GROUND CONTACT (19) AND TIGHTEN THE SET SCREWS USING AN ALLEN WRENCH WITHOUT ADDITIONAL LEVERAGE. (TWO GROUND CONTACTS HAVE BEEN PROVIDED IF REQUIRED).
- 9) INSERT THE GROUND CHECK LEADS INTO THE GROUND CHECK CONTACTS (21) AS DESIRED AND TIGHTEN THE SET SCREWS (48).
- 10) INSERT THE THREE ACRYLIC INSULATING TUBES (25) INTO THE SLOTS AROUND THE PHASE CONTACTS IN THE INSULATOR PLATE. MAKE SURE THE TUBES ARE SEATED COMPLETELY IN THE GROOVES AND INSERT THE ACRYLIC TUBE RETENTION PIN (29) INTO THE HOLE IN THE CENTER OF THE INSULATOR.
- 11) APPLY SILICONE LUBRICANT (PROVIDED IN THE COUPLER KIT) TO THE O-RING ON THE INSULATOR. ALIGN THE DESIRED SLOT IN THE INSULATOR (SEE FIG. 2) WITH THE PIN INSIDE THE SOCKET FLANGE AND INSTALL THE INSULATOR ASSEMBLY.
- 12) INSTALL THE INSULATOR RETAINING RING (32) AND MAKE SURE IT IS SEATED PROPERLY IN THE GROOVE.
- 13) ATTACH THE SOLDERLESS TERMINAL WITH THE SMALLER HOLE ON THE SHELL GROUND STRAP (36) TO THE SOCKET FLANGE USING THE 1/4-20 BRASS SCREW (37) AND LOCK WASHER PROVIDED.
- 14) MOUNT THE COMPLETED COUPLER WITH THE GROUND CHECKS IN THE 6 O-CLOCK POSITION USING THE 4 - 5/16-18 BOLTS AND LOCK NUTS PROVIDED, REMOVE ANY PAINT FROM AROUND THE LOWER RIGHT HOLE ON THE FRAME AND ATTACH THE GROUND STRAP ASSEMBLY (36) TO THAT POSITION AS SHOWN ON THE "CABLE END" ILLUSTRATION BELOW.

ITEM#	QTY.	PART#	DESCRIPTION
X	1	202	1/4" LOCK WASHER (NOT SHOWN)
XX	1	342	COPPER SHIELDING TAPE (NOT SHOWN)
1	1	765	SOCKET FLANGE
2	1	720	SOCKET FLANGE O-RING
3	4	785	MLVNT ROLLER PIN
4	1	787A	LARGE ROLLER PIN SPACER
5	4	786	ROLLER PIN SLEEVE
6	3	787	SMALL ROLLER PIN SPACER
7	1	789	INSULATOR LOCATING PIN
11	1	780	SOCKET DUST COVER
12	1	171D	COVER CABLE
13	1	183	1/4-20 X 1-1/4" HEX HEAD BOLT
14	1	194	1/4" LOCK NUT
15	3	228	PHASE CAP O-RING
16	3	704	PHASE CONTACT CAP
17	3	775	FEMALE PHASE CONTACT
18	3	719	PHASE CONTACT RETAINING RING
19	2	776	FEMALE GROUND CONTACT
20	2	989	GROUND CONTACT RETAINING RING
21	2	777A	FEMALE GROUND CHECK CONTACT
22	1	782	MLVNT INSULATOR
23	1	716	MLVNT INSULATOR O-RING
24	6	714-	MLVNT CONTACT SET SCREW
25	3	783	ACRYLIC CONTACT INSULATOR TUBE
26	1	519	TUBE RETENTION PIN O-RING
27	3	718	PHASE CONTACT O-RING
28	2	987	GROUND CONTACT O-RING
29	1	784	ACRYLIC TUBE RETENTION PIN
30	4	710	5/16-18 X 1-1/4" BOLT
31	4	709	5/16-18 NYLON NUT
32	1	727	INSULATOR RETAINING RING
33	2	715	GROUND CHECK O-RING
34	2	706	GROUND CHECK RETAINING RING
36	1	734	SHELL GROUND STRAP ASSEMBLY
37	1	316	1/4-20 X 1/2" BRASS SCREW
38	1	181	1/4-20 X 5/8" BOLT
48	4	315	1/4-20 SET SCREW
65	3	701	INSULATOR SLOT PLUG

ALL HARDWARE IS STAINLESS STEEL UNLESS OTHERWISE SPECIFIED

